

HONDA
The Power of Dreams

The Ultimate Honda **Accord**
HYBRID



www.hondacarindia.com

1016



Made of Power. Made of Dreams. Made of Honda.

What does it mean to be born of Honda? It means having the power of dreams. A philosophy that propels us to create intelligent vehicles and experiences that continually elevate standards across safety, performance, sustainability and driving pleasure. The result is our remarkable lineage of automobile excellence that the world celebrates. We don't wait for the future, we build it.

This is the same commitment that is creating the next generation of flight with the HondaJet. It is the world's most advanced light business jet with revolutionary technology and design attributes that help it achieve far better fuel efficiency, more available cabin and luggage space, and higher cruise speed than conventional aircrafts in its class. The legacy of the HondaJet is the same passion for detail that goes into the Honda NSX super cars, a performance masterpiece. It boasts of McLaren-Honda F1 lineage that adds the racing DNA to every engine that Honda brings to you. As pioneers of mobility engineering, the NSX, the HondaJet and the F1 DNA are all precursors to the future of mobility. ASIMO, an acronym for "Advanced Step in Innovative Mobility", is the result of three decades of dedication by Honda scientists and engineers. Today ASIMO plays ambassador of science to people across the world, inspiring the young and the curious everywhere.

Our approach is to let curiosity lead the way and learn as we go. This pushes our technology forward; from the first Honda car we built in 1963, to four-stroke marine engines, electric lawnmowers and intelligent motorbikes. Experience in one area gives us ideas in others, leading to innovations like magic seats, the advanced driver assist system and our engines. But it's still just the beginning. Jet engines, advanced robotics, performance engines from the F1, that's the legacy of the Sport Mode i-MMD hybrid engine and the 9th generation Honda Accord Hybrid 2016 is bringing it alive for you.



Ultimate takes a breathtaking turn.



A higher breed.



When Honda builds a hybrid, you've got to be sure it's a marvel. And an Accord Hybrid is when technology surpasses the known and takes a leap of faith into tomorrow. This is the next generation Accord, the ninth generation to be precise, that will define a new balance it brings to the world. A power lord at its heart. A revolutionary in its soul. A change leader in its actions. The sport hybrid 'Intelligent Multi-Mode Drive' (i-MMD) in the all-new Accord Hybrid is a cutting edge Honda-developed powertrain. This advanced hybrid powertrain belongs to the Earth Dreams Technology series, combining enjoyable driving with outstanding fuel economy. Welcome to the league of extraordinary.

Powered by Honda

The power of Honda is derived from its expertly crafted, technologically advanced and innovative powertrain. The new Honda Accord Hybrid features the 'Intelligent Multi-Mode Drive (i-MMD)', a two-motor hybrid powertrain working with 2.0L Atkinson Cycle DOHC i-VTEC engine, Intelligent Power Unit (IPU) consisting of a Li-Ion battery pack, controlled and managed by an intelligent power control unit. This refined and sophisticated system makes Honda Accord the ultimate hybrid with more power and fuel efficiency. Together, with a peak combined output of 215 PS and a fuel economy of 23.1 km/l, the Accord Hybrid will be at the top of its class.



ENGINE

2.0L Atkinson Cycle DOHC i-VTEC engine develops maximum power output of 145 ps and 175 nm torque.



MOTOR

Two electric motors, a propulsion motor that drives the wheels and a generator motor that creates electricity. The propulsion motor's maximum power is 184 ps and 315 nm torque. The 2-motors, along with the engine lock-up clutch, form the electric continuously variable transmission (E-CVT)

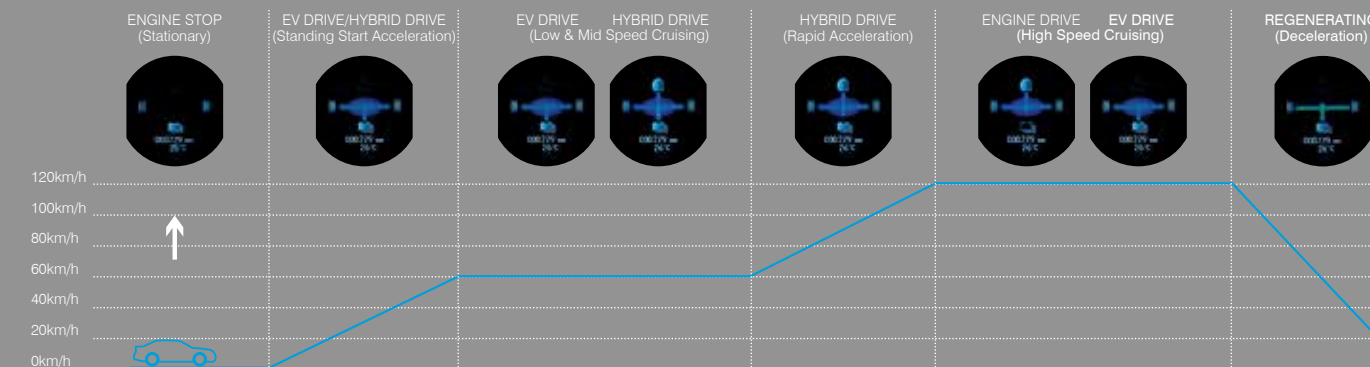


BATTERY

High energy density 1.3 kWh Li-ion battery pack powers the Accord Hybrid's electric propulsion motor.

Method to a great drive.

The New Honda Accord Hybrid has three driving modes, the EV Drive, the Hybrid Drive and the Engine Drive, that yield a remarkable combination of performance and efficiency. The two-motor system is capable of operating as either a serial or parallel hybrid or an electric vehicle, based on the needs of the driver. In the 'EV Drive' mode, the propulsion motor provides a motive force, drawing energy from the lithium ion battery and operates as an electric-only vehicle. In the 'Hybrid Drive' mode, the engine is initially started by the generator motor, then it begins to power the generator, which provides energy to the motor and the battery can assist with power as required. The Accord Hybrid spends most of its time in this mode and operates as a series hybrid. In the Engine Drive mode, the clutch connects the engine and driveline, and the engine power is directly sent to the wheels. The motor can also provide power assist as necessary. In this mode, the Accord Hybrid operates as a parallel hybrid.



EV MODE
EV button lets the driver select purely electric operation and in this mode a green EV icon gets lit on the instrument panel.



SPORT MODE
The Sport Mode provides a more engaging driving experience by adding more battery assist to the propulsion motor for increased acceleration.



ECON MODE
In the Econ Mode, several operating characteristics of the vehicle are modified for enhanced fuel efficiency.



ECO ASSIST
The Eco Assist system has illuminated arcs on the side of speedometer to show if the vehicle is being driven in an efficient style. The color changes gradually in response to the overall driving style.



LED FOG LAMP



ONE-TOUCH POWER SUNROOF



RAIN-SENSING WIPERS



AUTOMATIC LED HEADLAMPS WITH INTEGRATED LED DRL



SPORTY R18 MULTI-SPOKE ALLOY



REAR COMBI LAMP



The shape of genius

Every curve a stroke of beauty. Every line an act of balance and movement. The Accord Hybrid has always been sculpted to breakthrough and create a masterpiece of classic design. Its road presence is a craft.





Comfortably thrilling.

This is the hallmark of a technology leader, one who can seamlessly blend luxury and craftsmanship into the engineering. Human comfort can never take the backseat, in fact everything is designed around the driving experience. The perfection of leather, the premium wood finish, the ultra-luxurious spacious cabin with a host of convenience features, all come together to create an in-car atmosphere that rivals a luxury lounge. Because the Accord Hybrid's technology is what leads the world and its luxury is what leads the heart.



REMOTE ENGINE START ONE PUSH IGNITION SYSTEM SMART ENTRY 8-WAY POWER ADJUST DRIVER SEAT WITH TWO POSITION MEMORY FUNCTION POWER ADJUST CO-DRIVER SEAT REAR AC VENTS



The cabin is my oyster.

Settle into sophistication. A unique in-cabin experience that only a Honda Accord Hybrid can evoke is waiting for you. Innovative technology meets elegant design, making the new Honda Accord Hybrid one of the most amazing feelings. Forget having to tinker with AC controls as the i-Dual Zone automatic climate control system not only creates independent left and right temperature zones but can also judge the sun direction and strength to adjust temperature and air volume automatically. And to top it off, do all of this and more without having to take your hands off the wheels, thanks to the multi-functional leather wrapped steering wheel with mounted controls.



POWER CHARGE METER



i-DUAL ZONE AUTOMATIC CLIMATE CONTROL WITH PLASMA CLUSTER



MULTI-FUNCTIONAL STEERING WHEEL



Revel in your world.

The world in a swipe, tap or pinch. The Honda Accord Hybrid offers you an intuitive high definition touchscreen display system. Equipped with a satellite-linked navigation system, an in-built Wifi receiver for internet browsing and infotainment features, it lets you get to your destination in one smooth drive. The premium audio system with subwoofers and tweeters makes your favourite music even more enjoyable. You can also seamlessly connect it to your smartphone to make hands-free calls and more while focusing completely on the road ahead.

Apple CarPlay™

Support for Apple CarPlay™ allows you to access several of your iPhone® features on the display audio touchscreen.



Android Auto™

Android Auto allows you to use your compatible Android™ phone to access directions, your music and more, all through the display audio touchscreen.

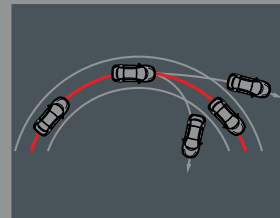


Safety. Evolved.

While every Honda car takes great pride in bringing the most updated safety features, the Accord Hybrid takes safety to the level of art. Not only is the Accord designed to safeguard you, it goes miles ahead to safeguard every bit of craftsmanship that you will cherish in it.



ACE™ BODY STRUCTURE



VEHICLE STABILITY ASSIST



HILL START ASSIST



FRONT AND REAR PARKING SENSOR



Honda LANEWATCH



MULTI-ANGLE REAR VIEW CAMERA



AUTO DIMMING IRVM



ACOUSTIC VEHICLE ALERT SYSTEM



DRIVER & CO-DRIVER SEAT BELT REMINDER



ACTIVE CORNERING LIGHT



HYDROPHILIC MIRROR



EMERGENCY STOP SIGNAL



It is said that perfection can never be attained. There's always an inch more that needs to be crafted. Our accessories are those inches, those flourishes and finishing touches that add up to the grand experience that the Accord Hybrid is. Discover accessories that complement the advancement of the Accord Hybrid.

An eye for the ultimate.



TRUNK GARNISH



BODY SIDE MOLDING



DOOR MIRROR GARNISH



BODY COVER



DOOR VISOR WITH CHROME

ACCORD HYBRID 2016 { THE COLOUR OF ULTIMATE.



Orchid White Pearl



Crystal Black Pearl



Modern Steel Metallic



Lunar Silver Metallic

DIMENSIONS & WEIGHT

HYBRID SYSTEM

Type	Sport Hybrid i-MMD (Intelligent Multi-Mode Drive)
	2-motor hybrid system
Total Max. Output (ps)	215 ps
Fuel Efficiency (km/l)*	23.1 km/l

ENGINE

Type	2.0L Atkinson cycle DOHC i-VTEC engine
Valve Train	16-Valve DOHC
Displacement (cc)	1993
Max. Power (ps@rpm)	145 @ 6200
Max. Torque (nm@rpm)	175 @ 4000

ELECTRIC DRIVE MOTOR

Max. Output (ps@rpm)	184 @ 5000-6000
Max. Torque (nm@rpm)	315 @ 0-2000

HYBRID BATTERY

Type	Lithium-ion battery
Capacity (kWh)	1.3

DRIVETRAIN

Transmission	Electronic Continuously Variable Transmission (E-CVT)
Automatic Drive Modes	EV Drive, Hybrid Drive & Engine Drive
Selectable Drive Modes	Sport Mode, EV Mode, ECON mode

DIMENSIONS & WEIGHT

Overall Length (mm) x W x H	4933
Overall Width (mm)	1849
Overall Height (mm)	1464
Wheelbase (mm)	2776
Track Front/Rear (mm)	1585/1590
Kerb Weight (kg)	1620
Gross Weight (kg)	1995
Tyres	235/45 R18 Tubeless Radials
Fuel Tank Capacity	60 litres
Seating Capacity	5-Seater

* As certified by ICAT in rule 115 of CMVR 1989

CHASSIS	
Suspension Front/Rear	MacPherson Strut with Coil Spring/Multi Link with Coil Spring
Anti-roll Bar	Torsion Bar Type (Front & Rear)
Shock Absorbers	Telescopic (Front & Rear)
Regenerative Braking System	Electric Servo Brakes
Brake Front/Rear	Ventilated Front/Solid Rear Disc Brakes
Steering System	Electric Power-Assisted Rack-and-Pinion Steering (EPS)

EXTRAORDINARY COMES STANDARD

EXTERIOR FEATURES

Hybrid Signature Blue Accent in Headlamp, Tail Lamp and Front Bumper Grille with Hybrid badging
Automatic LED Headlamp with Auto Levelling
LED Fog Lights
LED Day Time Running Lights
LED Position Lights with LED Turn Lights
Tail Lights with Integrated LED Light Bars
One Touch Electric Sunroof with Tilt Feature
Multi-Spoke 18" Aluminium Alloy Wheels
Body Coloured Outside Rear View Mirror with Side Turn Indicator
Rear Deck Lid Spoiler
Body Coloured Side Sill Garnish
Shark Fin Type Roof Antennae
Chrome Front Grille
Chrome Rear License & Bumper Garnish
Chrome Beltline and Window Line Garnish
Outer Handle Chrome

SEATS & INTERIOR TRIM

Premium Ivory Leather Seats & Upholstery
Driver's Seat with 8-Way Power Adjustment, including Power Lumbar Support
Two-Position Memory Function for Driver Seat
Co-Driver Seat with 4-Way Power Adjustment (with easy access switches for rear passenger on co-driver seat shoulder)
Adjustable Front Seat-Belt Anchors
4-Spoke Leather, Piano Black & Wood-finish Steering Wheel
Leather Wrapped Gear Knob
Driver & Passenger Side Seat Back Pockets
Inside Door Handle Chrome
Premium Wood Finish Garnish on Dashboard & Door
Premium Piano Black Finish on Centre Console

INSTRUMENT CLUSTER

Advanced Combimeter with Multi-Information Display Screen
Multi-Info Display (Odometer, Dual Tripmeter, Outside Temperature, Average Fuel Consumption, Instantaneous Fuel Consumption, Distance to Empty, Elapsed Time)

Energy Flow Display in MID screen
Power and Charge
Eco Assist System
ECON Mode Switch
Sport Mode Switch
EV Mode Switch

AUDIO & INFOTAINMENT

19.6 cm (7.7") Colour TFT i-MID (Intelligent Multi-Information Display)
17.8 cm (7") Advanced Display Audio with High-Resolution WVGA (800x480) Capacitive Touch-Screen
Seamless Smartphone Connectivity (Car Play™, Android Auto™)
Premium Sound System with Premium Speakers, Tweeters & Subwoofers
Bluetooth Audio and Bluetooth Handsfree Telephone
DVD/CD, AM/FM, WMA/MP3/AAC Playback
Honda Satellite-Linked Navigation System™
In-built Wifi Receiver for Internet Browsing
Voice Recognition
2-USB Audio Interface*1.5-Amp Charging Port in Front / 1.0-Amp Charging Port in Centre Console
HDMI Port in Centre Console
Customisable Settings (Display/Sound/Clock/Language & Touch Sensitivity)

INTERIOR COMFORT & CONVENIENCE

Remote Control Engine Start
Push Button Engine Start
Smart Entry System
i-Dual Zone Automatic Climate Control System (with auto adjustment of temperature and air volume based on sunlight direction and strength)
Plasma Cluster (for cabin air freshness)
Rear AC Vents
Steering Wheel Mounted Cruise Control
Steering Mounted Controls for Audio, Hands Free Telephone, Voice Command, i-MID Information Display & Multi-Information Control Switch
Rain sensing Wipers
Power Windows with Auto Up/Down & Anti-Pinch (All Windows)
Power Adjustable and Retractable Door Mirrors
Outside Mirror Electric Adjust, Retractable with Auto Fold
Outside Mirror Auto Tilt in Reverse
Remote Trunk Release
Remote Control Operation for Power Windows, Outside Mirror & Sunroof
Customizable Vehicle Settings (Door Lock, Outside Mirror Auto Fold, Meter, Keyless Access, Interior Lighting and Headlamps)
Power Door Lock Switch
Tilt & Telescopic Adjustable Steering Column
12-Volts Power Outlets in Front & Centre Console
Front Cigar Lighter

Front & Rear Ashtray
Centre Console with Armrest and Storage Compartment
Rear Centre Seat Armrest with Beverage Holder
Active Noise Cancellation (ANC)
One Touch Turn Indicators
Lockable Glove Box Compartment with Illumination
Sunvisors with Illuminated Vanity Mirror and Ticket Holder on Driver Sunvisor
Interior Illumination Package (Foot Lights/Door Courtesy Lamps/Front Map Lamp/ Rear Reading Lamps)
Cargo Area Light
Tire Repair Kit

SAFETY

Advanced Compatibility Engineering™ (ACE™) Body Structure
Front Dual i-SRS Airbags
i-Side Airbags
Side Curtain Airbags
3-Point Seat Belts at all Seating Positions
Front Seat Belt with Pre-tensioner & Load Limiter
ISOFIX and Anchor for Child Seats
Anti-Lock Braking System with Electronic Brake Force Distribution and Brake Assist
Vehicle Stability Assist (with Off Switch)
Hill Start Assist
Honda LaneWatch™
Multi-Angle Rearview Camera with Dynamic Guidelines
Front & Rear Parking Sensors
Active Cornering Lamps
Auto Dimming Day Night Inside Mirror
Programmable Auto Door Lock/Unlock
Rear Window Defogger
Hydrophilic Outside Mirror
Immobiliser & Security Alarm Sytem
Acoustic Vehicle Alert System (AVAS)
Emergency Stop Signal (ESS)
Front Driver & Passenger Seat-Belt Reminder



• For corporate sales enquiries write to corporatesales@hondacarindia.com • To exchange any existing car with Honda Accord Hybrid write to autoterrace@hondacarindia.com • Accessories shown may not be part of standard equipment • Fuel efficiency figures are based on standard test conditions • Actual fuel efficiency may vary based on road conditions, driving technique and driving environment • Hybrid battery warranty is of 5 years (60 months) from the date of sale • Warranty of unlimited km in 3 years period from date of sale of new vehicle is part of standard Accord Hybrid purchase. • Actual colors may vary from the ones shown here • Specifications and features are subject to change without prior notice. • Some images shown are for reference only • All values are for Honda Accord Hybrid only. • For further details, please contact your nearest Honda dealership.